

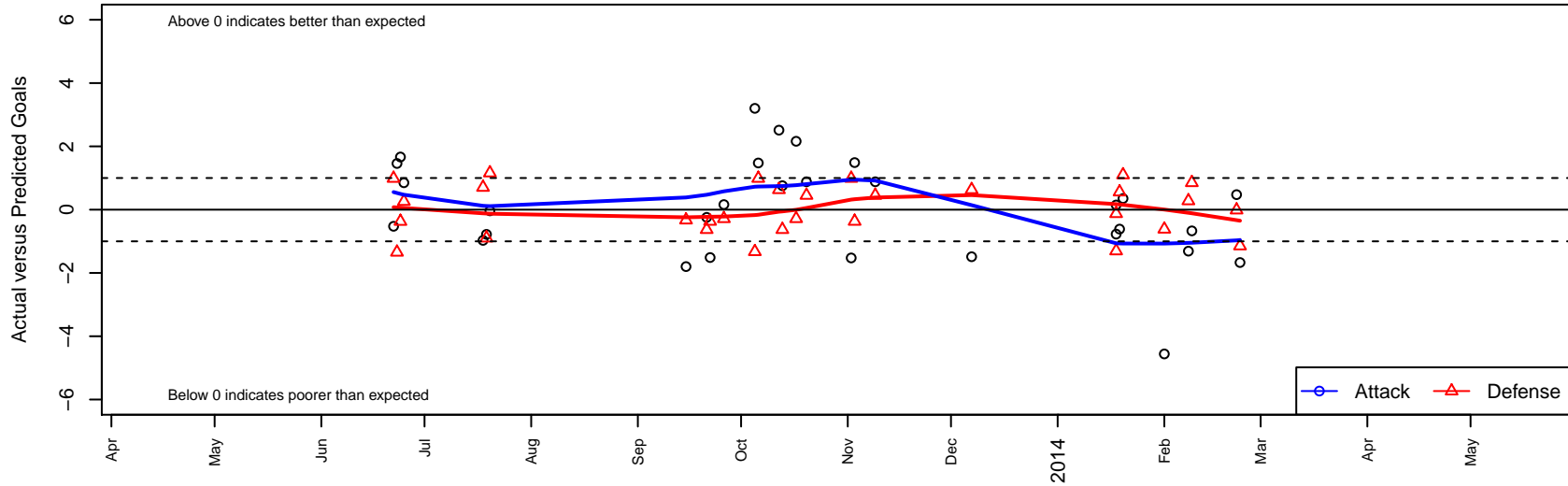
FC Spokane Black B97

FC Spokane
 Spokane, WA
 B97 total strength=1804
 attack=26.29 defense=39.99
 fall league = PSPL WSPL U16
 notes= Cooper 2012; Dunbar 2013
 alt names used:
 FC Spokane Black B97
 FC Spokane B97 Black
 FC SPOKANE B97 BLACK (WA)
 FC SPOKANE COOPER
 FC Spokane 97 Dunbar
 FC SPOKANE 97 DUNBAR
 FC Spokane B-97 Black
 FC SPOKANE BU16 BLACK DUNBAR (WA)

Venues played:
 US Club Regionals Super U15
 USClub Nationals U15 M02
 PSPL WSPL U16
 Portland Winter Showcase U16
 WA Cup BU15-17 Boys U16 Gold U16



FC Spokane Black B97
 Dots are actual minus expected GF (blue circles) and GA (red triangles).
 Blue line is smoothed change in attack strength. Red is smoothed change in defense strength.



	date	home		away		venue	pred.home	pred.away
1342	2014-02-23	FC Spokane Black B97	1	Wenatchee United B97	2	WA Cup BU15-17 Boys U16 Gold U16	2.67	0.85
1131	2014-02-22	FC Spokane Black B97	2	Emerald City FC Green B97	1	WA Cup BU15-17 Boys U16 Gold U16	1.53	0.99
1399	2014-02-09	FC Spokane Black B97	2	Wenatchee United B97	0	WA Cup BU15-17 Boys U16 Gold U16	2.67	0.85
1355	2014-02-08	FC Spokane Black B97	2	RSA Elite Black B97	0	WA Cup BU15-17 Boys U16 Gold U16	3.31	0.28
1103	2014-02-01	Cascade FC B97	1	FC Spokane Black B97	0	WA Cup BU15-17 Boys U16 Gold U16	0.38	4.56
660	2014-01-20	FC Spokane Black B97	1	Crossfire Oregon Green I WUSC Arsenal B97	0	Portland Winter Showcase U16	0.65	1.10
579	2014-01-19	FC Portland Navy B97	0	FC Spokane Black B97	1	Portland Winter Showcase U16	0.56	1.61
422	2014-01-18	Seattle United Copa B97	1	FC Spokane Black B97	1	Portland Winter Showcase U16	0.87	0.85
431	2014-01-18	FC Spokane Black B97	1	Boise Nationals Liverpool B97	2	Portland Winter Showcase U16	1.77	0.70
1645	2013-12-07	FC Spokane Black B97	1	Tynecastle FC B97	0	PSPL WSPL U16	2.49	0.63
1929	2013-11-09	ISC Gunners A B97	0	FC Spokane Black B97	4	PSPL WSPL U16	0.45	3.12
1394	2013-11-03	Kitsap Pumas 1 B97	1	FC Spokane Black B97	3	PSPL WSPL U16	0.63	1.51
1047	2013-11-02	Emerald City FC Green B97	0	FC Spokane Black B97	0	PSPL WSPL U16	0.99	1.53
1495	2013-10-20	FC Spokane Black B97	4	ISC Gunners A B97	0	PSPL WSPL U16	3.12	0.45
1700	2013-10-17	Washington East SC Seely B97	1	FC Spokane Black B97	4	PSPL WSPL U16	0.72	1.84
1578	2013-10-13	FC Edmonds Cobras B97	1	FC Spokane Black B97	4	PSPL WSPL U16	0.37	3.24
1147	2013-10-12	Tynecastle FC B97	0	FC Spokane Black B97	5	PSPL WSPL U16	0.63	2.49
1508	2013-10-06	FC Spokane Black B97	3	Emerald City FC Green B97	0	PSPL WSPL U16	1.53	0.99
1144	2013-10-05	XiFA 2016 B97	2	FC Spokane Black B97	5	PSPL WSPL U16	0.67	1.80
722	2013-09-26	FC Spokane Black B97	2	Washington East SC Seely B97	1	PSPL WSPL U16	1.84	0.72
596	2013-09-22	FC Spokane Black B97	0	Kitsap Pumas 1 B97	1	PSPL WSPL U16	1.51	0.63
251	2013-09-21	FC Spokane Black B97	3	FC Edmonds Cobras B97	1	PSPL WSPL U16	3.24	0.37
1613	2013-09-15	FC Spokane Black B97	0	XiFA 2016 B97	1	PSPL WSPL U16	1.80	0.67
990	2013-07-20	FC Spokane Black B97	1	FC Panthers Milan B97	0	USClub Nationals U15 M02	1.04	1.16
556	2013-07-19	FC Spokane Black B97	0	X B97	3	USClub Nationals U15 M02	0.78	2.10
366	2013-07-18	Solar Chelsea Pre-Academy B97	2	FC Spokane Black B97	0	USClub Nationals U15 M02	2.70	0.97
285	2013-06-25	FC Spokane Black B97	2	Crossfire Premier 1st -Acad Res B97	1	US Club Regionals Super U15	1.15	1.26
258	2013-06-24	FC Spokane Black B97	3	Whatcom Rangers Gold B97	1	US Club Regionals Super U15	1.34	0.63

	date	home		away		venue	pred.home	pred.away
<i>2016</i>	2013-06-23	FC Spokane Black B97	2	Eastside FC Red B97	2	US Club Regionals Super U15	0.54	0.65
<i>1889</i>	2013-06-22	Emerald City FC Green B97	0	FC Spokane Black B97	1	US Club Regionals Super U15	0.99	1.53